

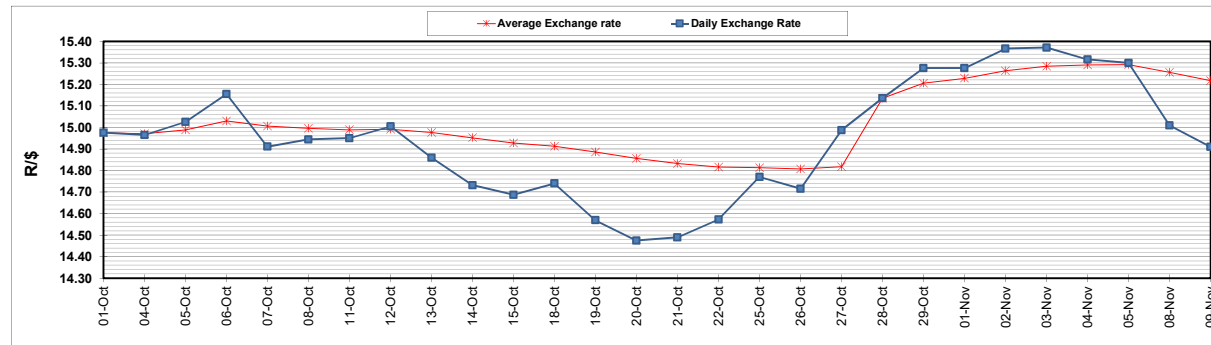
	PETROL 95 ULP	PETROL 93 ULP & LRP	DIESEL 0.05%	DIESEL 0.005%	ILL. PAR.
GAUTENG PUMP PRICE (SA c/l) AS FROM 03/11/2021	1,954.000	1,932.000	-	-	-
WHOLESALE PRICE (SA c/l) AS FROM 03/11/2021	-	-	1,719.980	1,723.380	1,125.488
SINGLE NATIONAL MAXIMUM RETAIL PRICE	-	-	-	-	1,433.000
BASIC FUEL PRICE - 09/11/2021 (SA c/l)	933.969	912.644	927.959	933.355	916.957
PRESS RELEASE CONTRIBUTION TO BFP 03/11/2021 - 09/11/2021 (SA c/l)	937.110	925.110	917.630	921.030	912.128
UNIT OVER/(UNDER) RECOVERY - 09/11/2021 (SA c/l)	3.141	12.466	(10.329)	(12.325)	(4.829)
AVERAGE BASIC FUEL PRICE 28/10/2021 - 09/11/2021	974.460	952.414	933.607	939.514	927.747
AVERAGE UNIT OVER/(UNDER) RECOVERY 28/10/2021 - 09/11/2021	(90.149)	(80.105)	(80.866)	(83.372)	(80.063)

ANALYSIS MOVEMENT OF AVERAGE OVER/(UNDER) RECOVERY

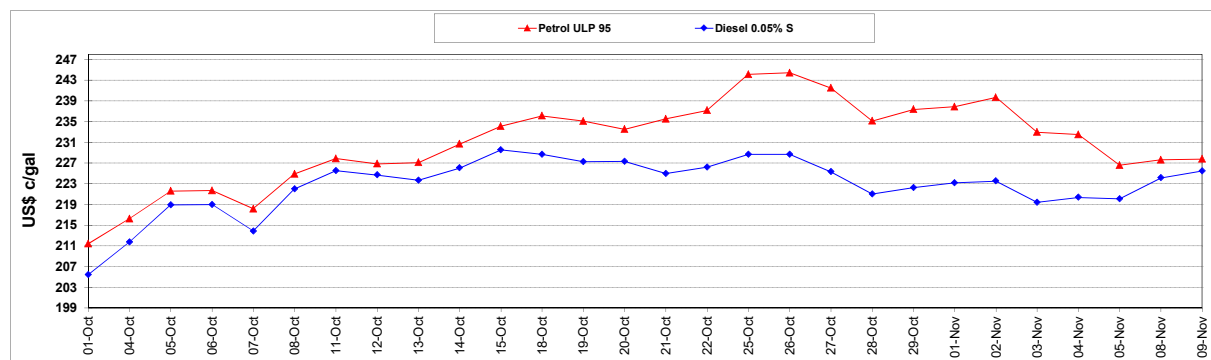
	PETROL 95	PETROL 93	DIESEL 0.05%	DIESEL 0.005%	ILL. PAR.
- MOVEMENT IN INTERNATIONAL PRODUCT PRICES	(64.542)	(55.075)	(56.332)	(58.683)	(55.683)
- MOVEMENT IN EXCHANGE RATE	(25.608)	(25.029)	(24.534)	(24.690)	(24.380)
AVERAGE UNIT OVER/(UNDER) RECOVERY 28/10/2021 - 09/11/2021	(90.149)	(80.105)	(80.866)	(83.372)	(80.063)

R/\$ EXCHANGE RATE - (R/\$14.9095 - 09/11/2021)

EXCHANGE RATE USED IN BASIC FUEL PRICE



INTERNATIONAL PRODUCT PRICES OF BASKET USED IN BASIC FUEL PRICE



BASIC FUEL PRICE IN SA CENTS PER LITRE

